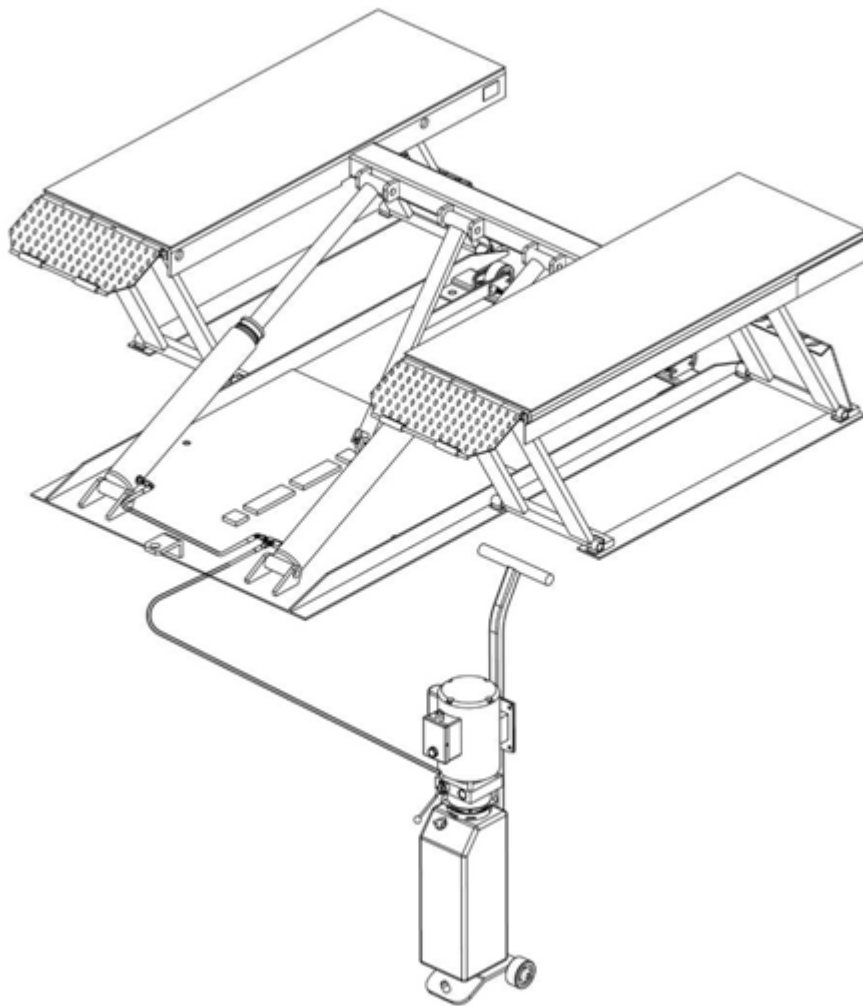




INDYPRO

LIFTS & EQUIPMENT



PORTABLE LOW-RISE LIFT
Model:TLR10

CONTENTS

Product Features and Specifications	1
Installation Requirement	2
Step of Installation.....	3
Exploded View	8
Operation Instructions.....	11
Maintenance Schedule.....	12
Trouble Shooting.....	13
Parts List	14

I. PRODUCT FEATURES AND SPECIFICATIONS

PORTABLE LOW-RISED MODEL TLR10

- Automatic safety lock: 3 position safety lock
- Automatic safety lock release
- Portable unit is easy to move with the power unit stand
- High speed: From 0-600mm (23 5/8 ") in just 30 seconds
- Standard rubber pads included.
- Dual cylinders assist with smooth even lifting
- Movable drive -thru ramps and extended platforms accommodate varying wheelbase vehicles



Fig.1

MODEL TLR10 SPECIFICATIONS

Model	Lifting capacity	Raised Height	Min. Height	Lifting Time	Overall Length	Overall Width	Runway Width	Gross Weight	Motor
TLR10	4.5T 10000 lbs	600mm 23 5/8"	105mm 4 1/8"	30S	1938mm 76 1/4"	1780mm 70"	456mm 18"	450kg 1000 lbs	2.0/3.0 HP

II. INSTALLATION REQUIREMENT

A. Tools requirement

✓ Screw Set



✓ Socket Head Wrench (8")



✓ Wrench sets: (13#, 15#, 17#, 19#)



✓ Grease gun



✓ Pliers



Fig. 2

B. Power Requirement

The electrical source must be 2.2KW minimum. The source cable size must be 2.5mm² and in good condition of contacting with floor.

III. STEPS OF INSTALLATION

A. Check the parts before assembly, make sure all the parts are completed.

1. Packaged lift, Parts box, Power Unit and Power Unit Stand.

Move the parts aside, open the outer packing and check the parts according to the shipment parts list (See Fig. 3).

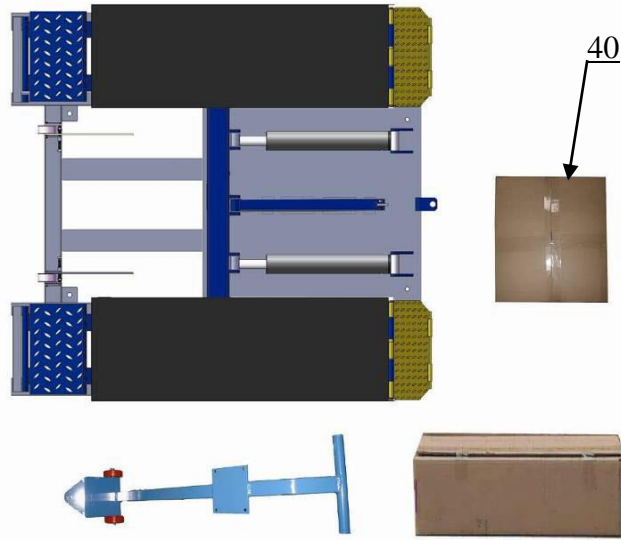


Fig. 3

2. Open the parts box, check the parts according to the part list (See Fig. 4).

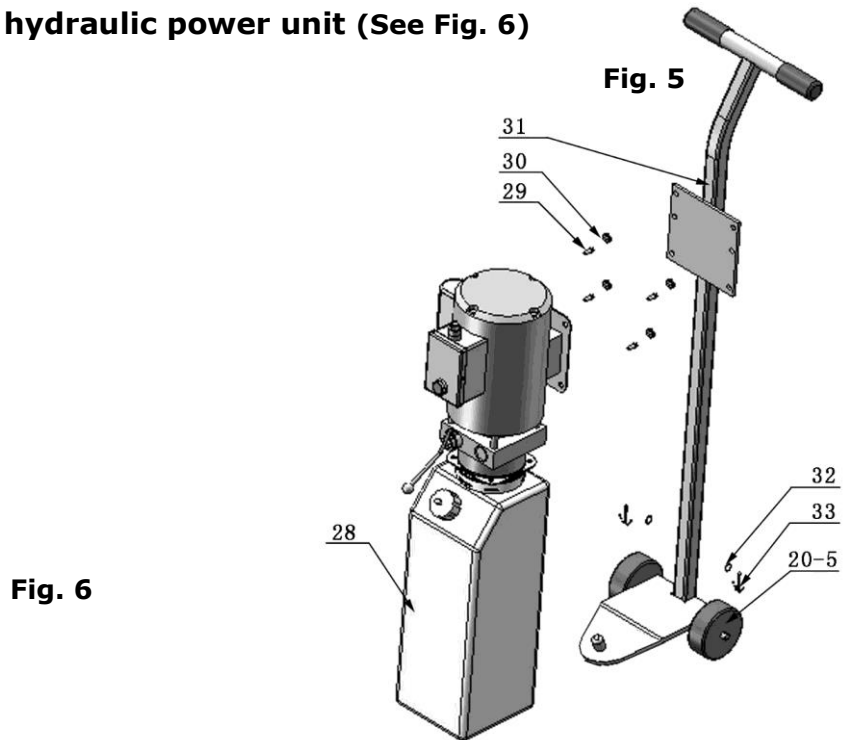


Fig. 4

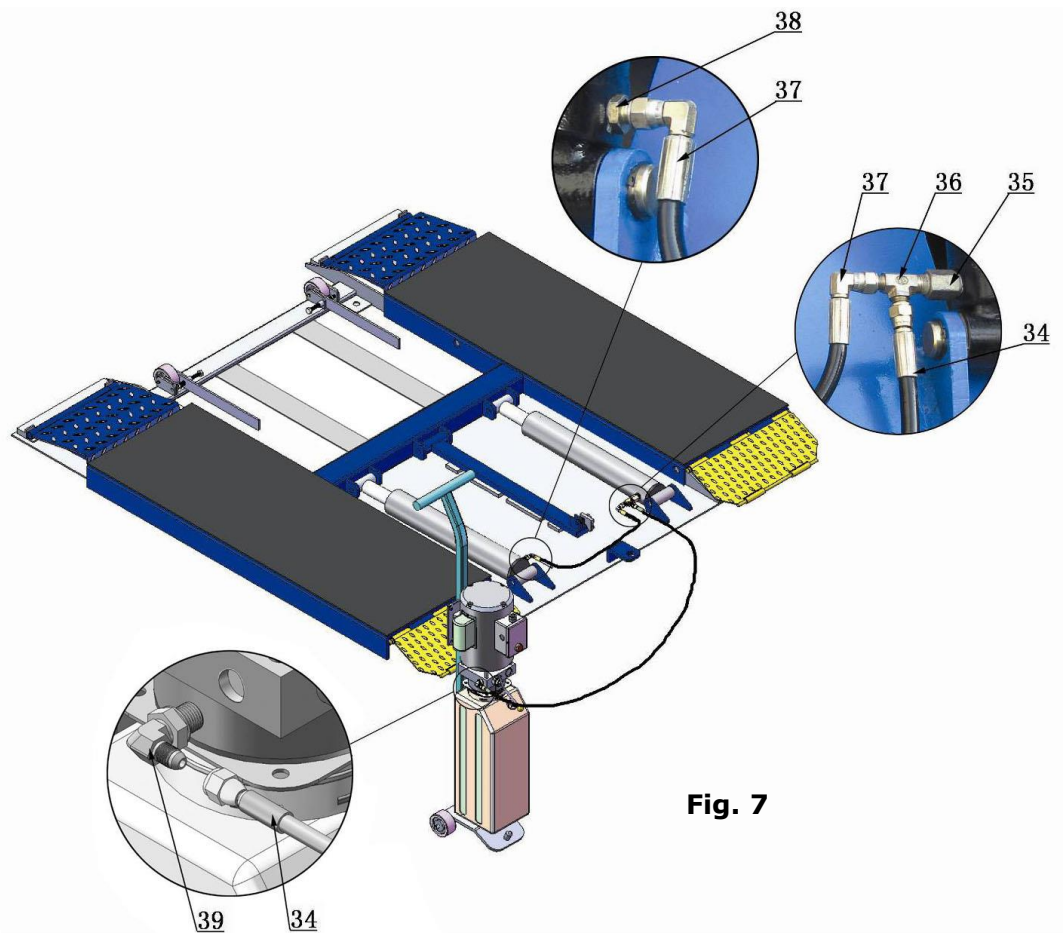
3. Check the parts of the parts bag according to the parts bag list (See Fig. 5).



B. Install hydraulic power unit (See Fig. 6)



C. Install fitting and connect oil hose (See Fig.7).



D. Install electric system

Connect the power source on the data plate of power unit.

Note: 1. For the safety of operators, the power wiring must contact the floor well.

2. Pay attention to the direction of rotations when using three phases motors.

INDYPRO single phase motor (Fig.8)

1. Connecting the two power supply lines (active wire **L** and neutral wire **N**) to terminals of AC contactor marked **L1**, **L2** respectively.
2. Connecting the two motor wires to terminals of AC contactor marked **T1**, **T2**.
3. Connecting **L2** to **A2** of AC contactor.
4. Connecting two wires of control button to A.C. contactor terminals marked **A1**, **L1**.

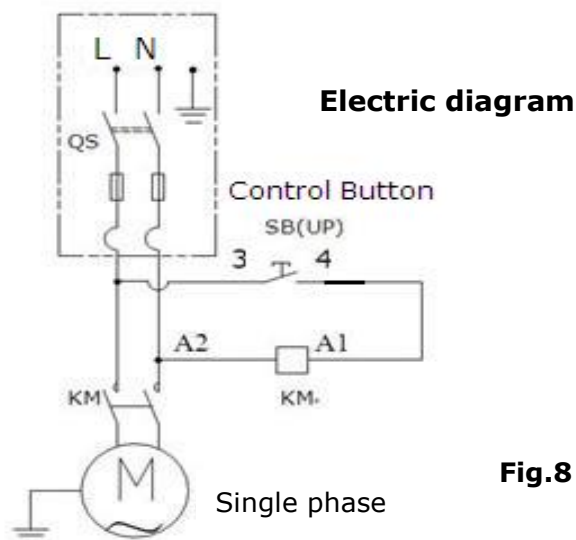
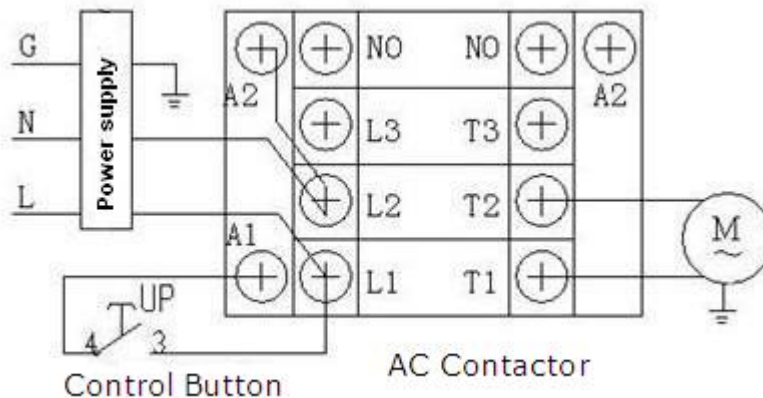


Fig.8

SPX single phase motor (See Fig.9)

1. Power supply active wire **L** connected with control button wire **4#**.
2. Control button wire **3#** connected with motor wire **6#**.
3. Motor wire **5#** connected with power supply neutral wire **N**.

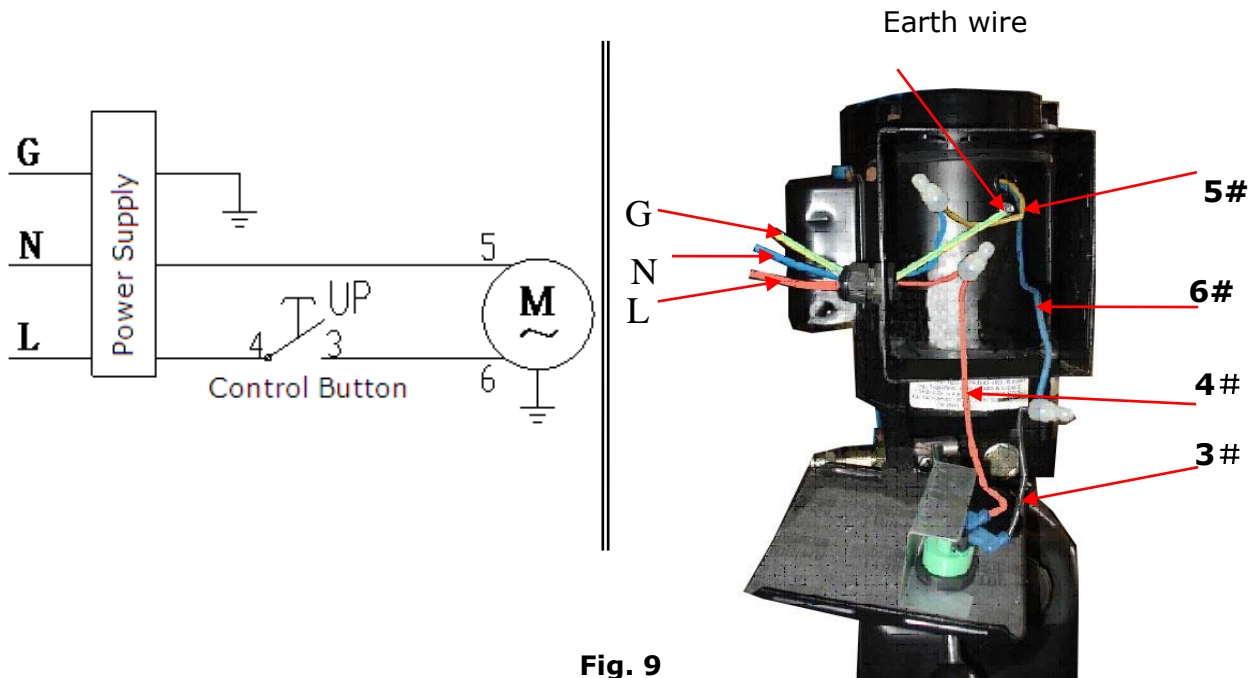


Fig. 9

INDYPRO three phase motor

1. Electric diagram (See Fig.10)

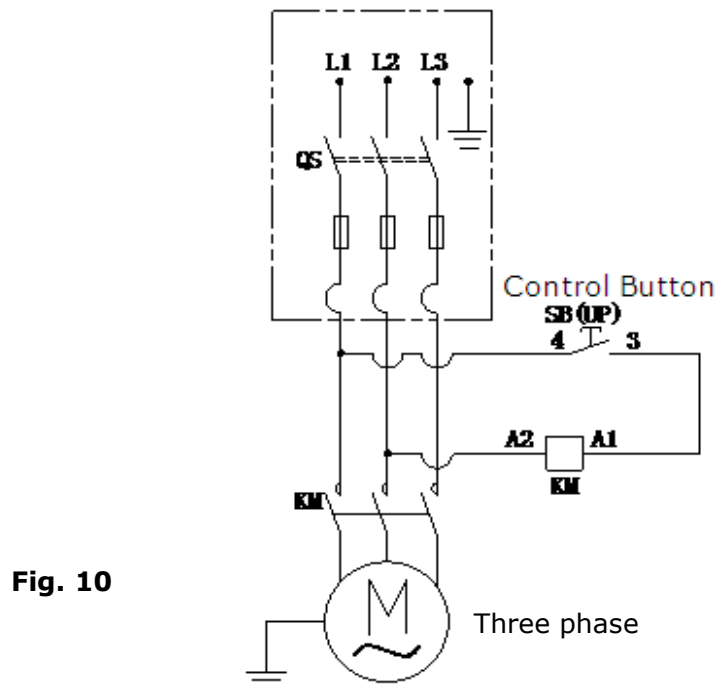


Fig. 10

2. Steps for connection (See Fig.11)

- a. The source wires (**L1, L2, L3**) connected with terminals of AC contactor marked **L1, L2, L3** respectively.
- b. Terminal **L1** of A.C. contactor connected with terminal **4#** of control button, terminal **A1** connected with terminal **3#** of control button.

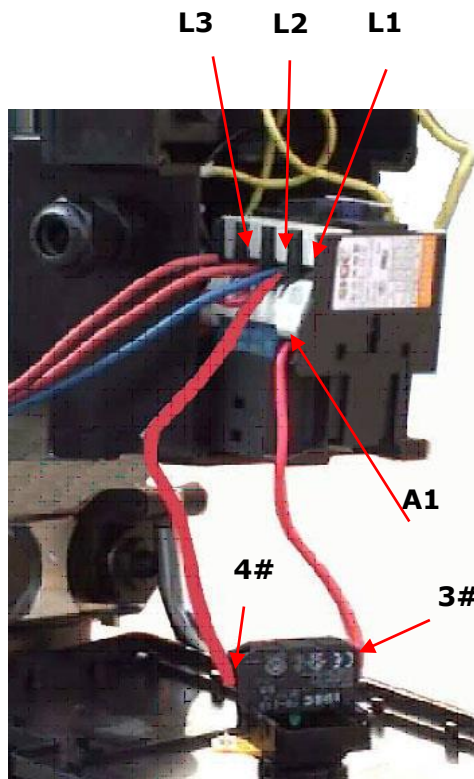
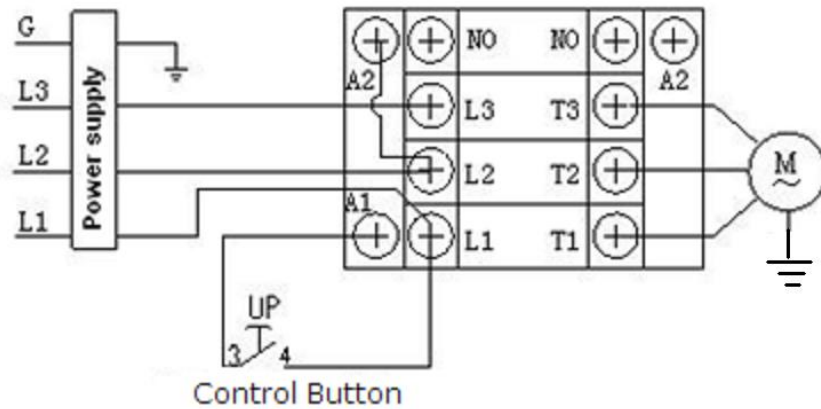


Fig. 11

IV. EXPLODED VIEW

MODEL TLR10

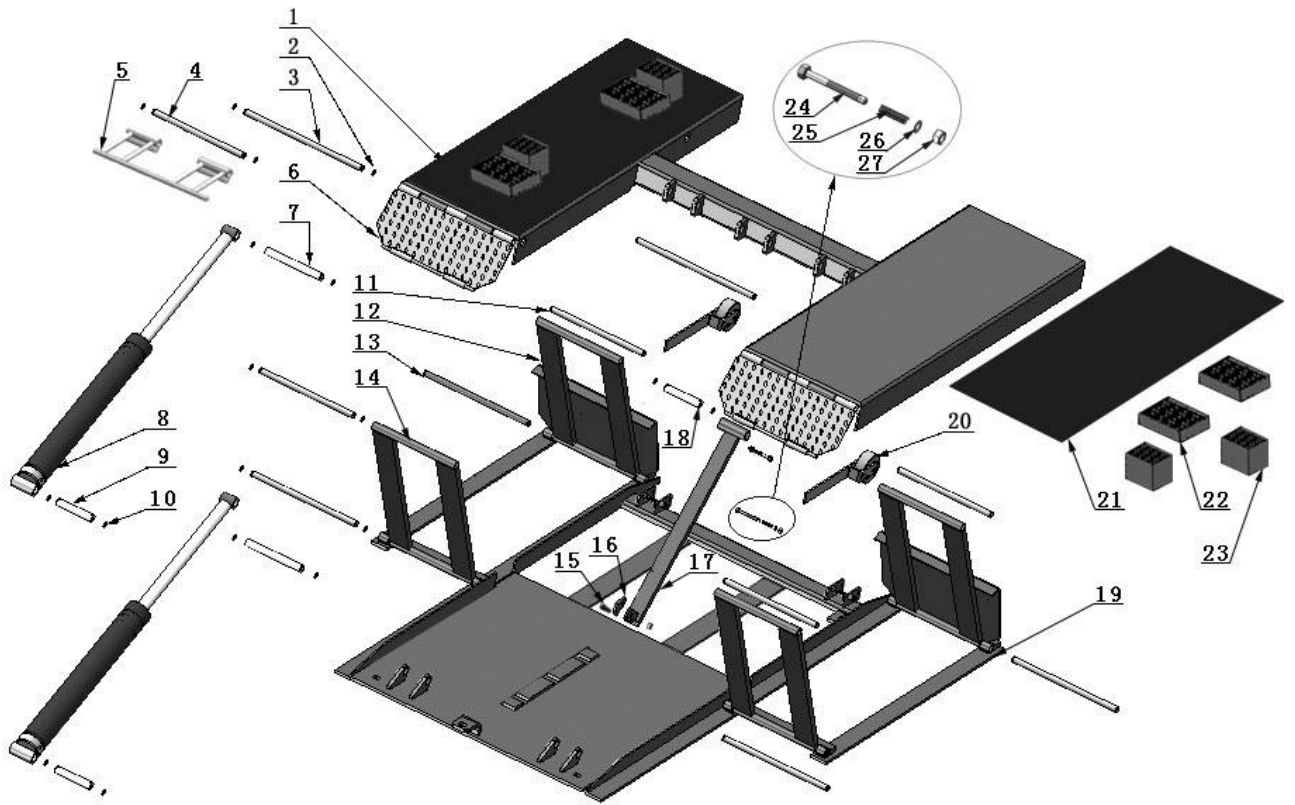


Fig. 12

CYLINDER

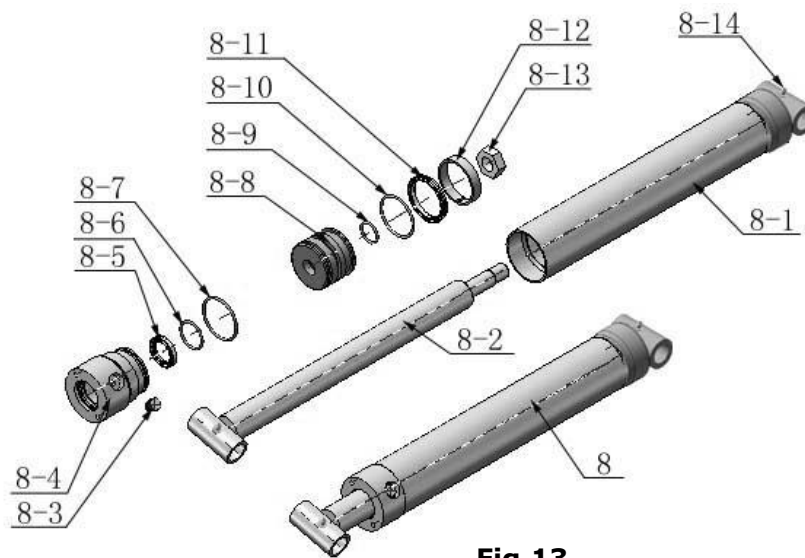


Fig.13

ROLLER ASSY.

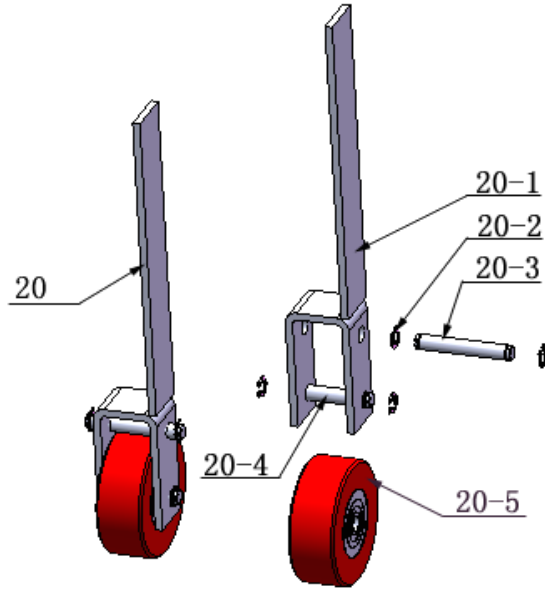
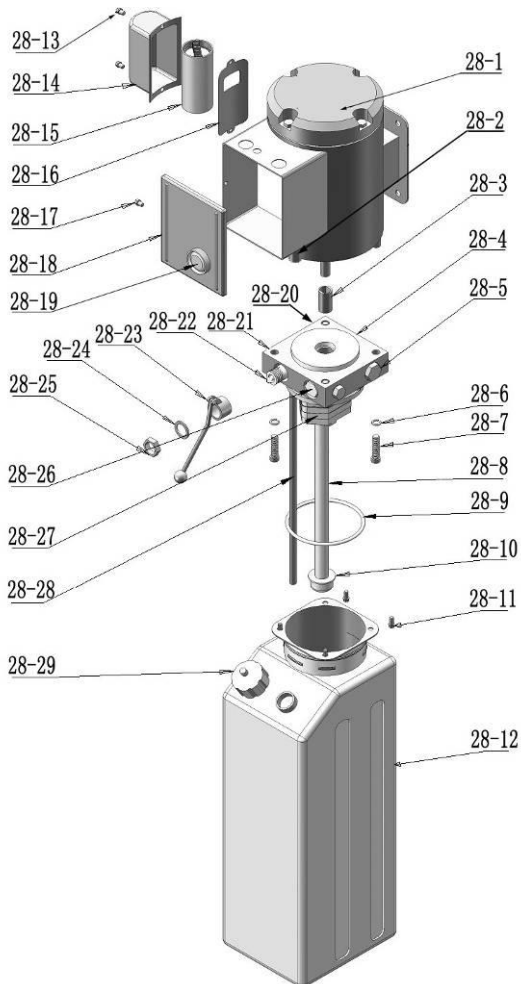


Fig. 14

SPX & INDYPRO MANUAL POWER UNIT

SPX 220V/60Hz/1 Phase



INDYPRO 220V/60Hz/1 Single

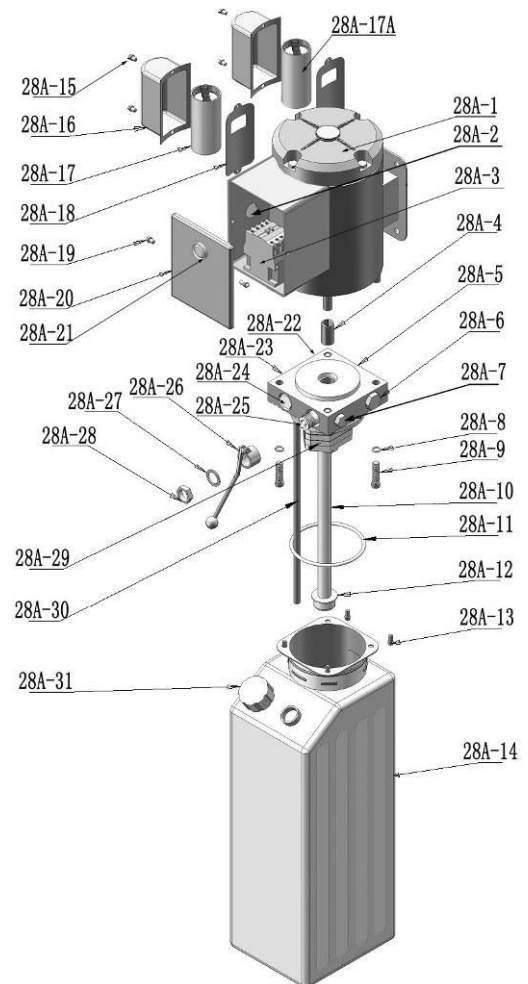


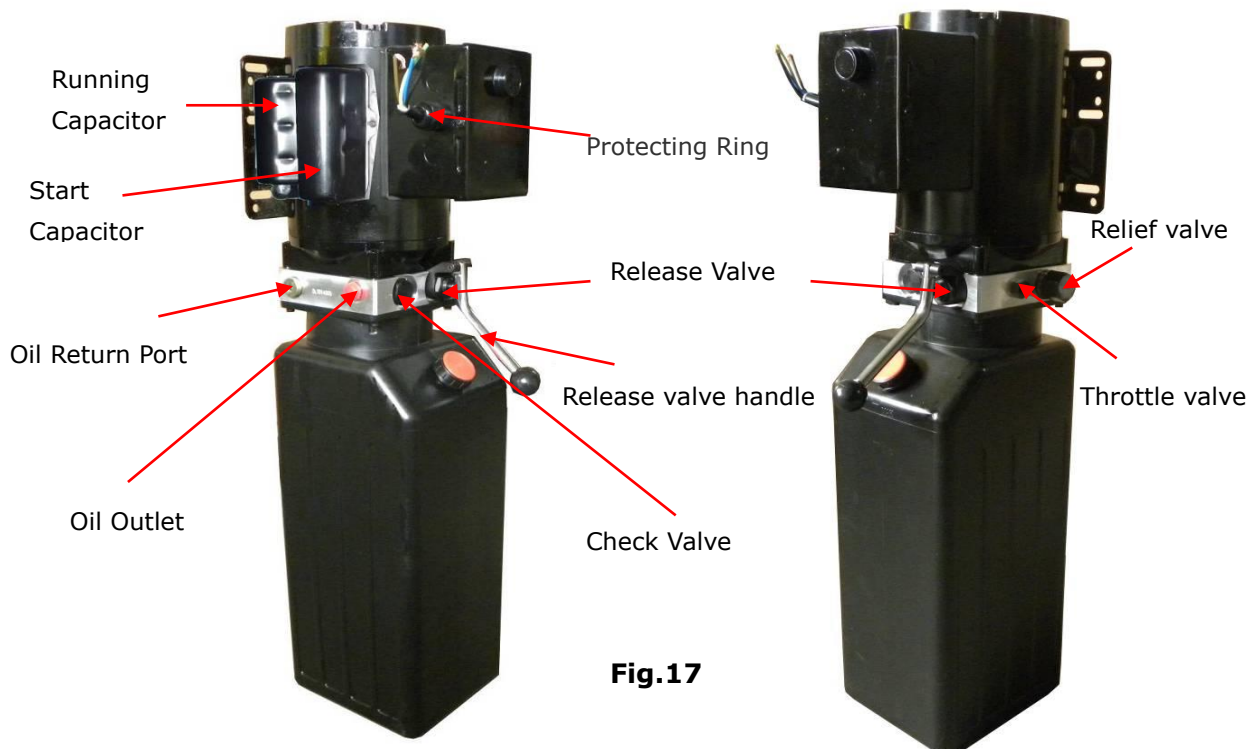
Fig. 15

Illustration of hydraulic valve for power unit

SPX manual power unit 220V/60Hz /1 Phase (See Fig.16)



INDYPRO manual power unit 220V/60Hz/1Phase (See Fig.17)



V. OPERATION INSTRUCTIONS

1. Install the oil hose between oil cylinder and power unit, connect well the power supply wire. The machine can be ready to use.
2. The roller assy. must be disengage when lifting vehicle (**See Fig.20**).
3. To raise and lock the lift: Press the button up till the lift is raised to the required height and the locks are in engaged (**See Fig.18**), then push release handle of the power unit, the lift would be locked.
4. To lower lift: Press the button UP, until the safety lock is in the released position (**See Fig.19**), lower lift by pushing lowering handle.

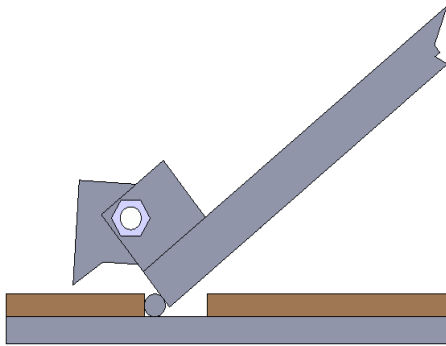


Fig.18

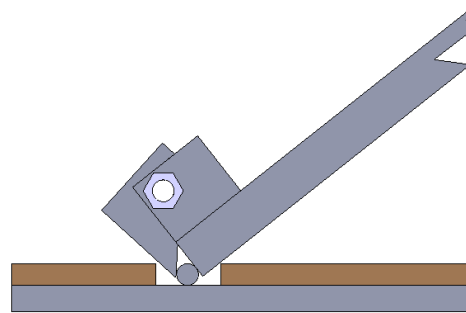


Fig.19

5. Move lift: Pull up roller bracket, lock two roller assy. to the lift with roller shaft. (**See Fig. 20&21**). Moving the lift by the power unit stand.

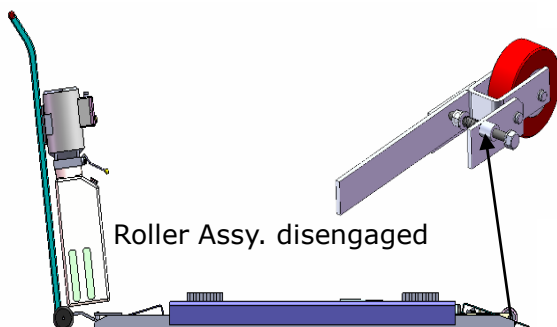


Fig. 20

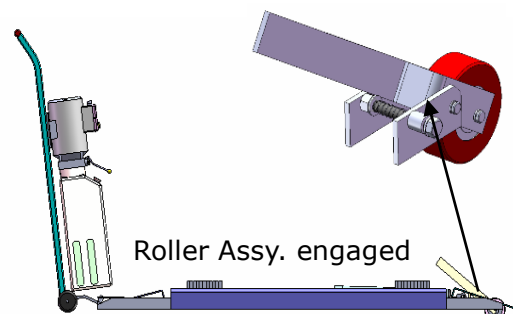


Fig. 21

5. There are four fixed holes in the machine, can fix the machine on ground by 3/4 X 4 3/4" anchor bolts (**See Fig.22**).

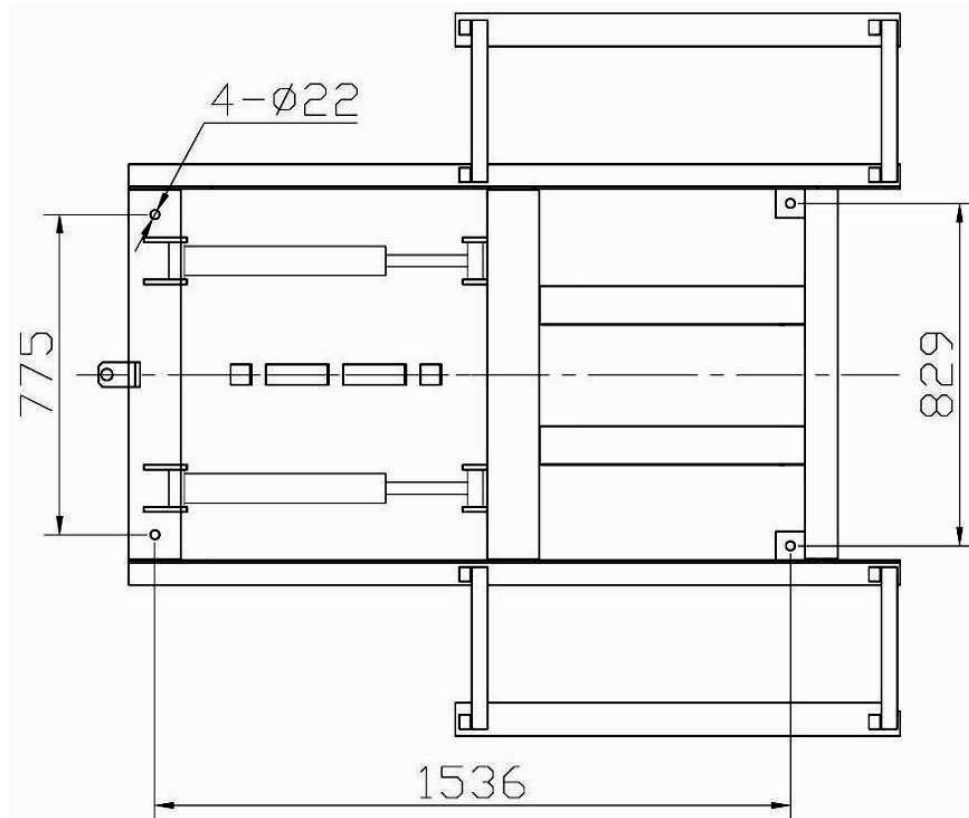


Fig. 22

VI. MAINTENANCE SCHEDULE

Monthly:

1. Lubricate all moving parts with lubricant.
2. Check all connectors, bolts and pins to insure proper mounting.
3. Make a visual inspection of all hydraulic hoses/lines for possible wear or leakage.

Every six months:

1. Make a visual inspection of all moving parts for possible wear, interference or damage.
2. Check all fastener and re-torque.

VII. TROUBLE SHOOTING

TROUBLE	CAUSE	REMEDY
Motor does not run	<ol style="list-style-type: none"> 1. Button does not work 2. Wiring connections are not in good condition 3. Motor burned out 4. AC contactor burned out 	<ol style="list-style-type: none"> 1. Replace button 2. Repair all wiring connections 3. Repair or replace motor 4. Replace AC Contactor
Motor runs but the lift is not raised	<ol style="list-style-type: none"> 1. Motor runs in reverse rotation 2. Gear Pump out of operation 3. Release Valve in damage 4. Relief Valve or Check Valve in damage 5. Low oil level 6. Overload or system low pressure 	<ol style="list-style-type: none"> 1. Reverse two power wire 2. Repair or replace 3. Repair or replace 4. Repair or replace 5. Fill tank 6. Check load or adjusting the pressure of hydraulic system
Lift does not stay up	<ol style="list-style-type: none"> 1. Release Valve out of work 2. Relief Valve or Check Valve leakage 3. Cylinder or Fittings leaks 	Repair or replace
Lift raises slowly	<ol style="list-style-type: none"> 1. Oil line is jammed 2. Motor running on low voltage 3. Oil mixed with air 4. Gear Pump leaks 5. Overload lifting 	<ol style="list-style-type: none"> 1. Clean the oil line 2. Check electrical system 3. Fill tank 4. Repair or replace pump 5. Check load
Lift can not lower	<ol style="list-style-type: none"> 1. Safety device are in activated 2. Release valve in damage 3. Oil system is jammed 	<ol style="list-style-type: none"> 1. Release the safeties 2. Repair or replace 3. Replace Clean the oil system

VIII. PARTS LIST FOR MODEL TLR10 (See Fig. 12, Fig.6-7)

Item	Part#	Description	QTY.	Note
1	630001A	Platform	1	
2	206019	Snap ring	24	
3	630003	Pin for Drive-thru Ramp	2	
4	630106	Bracket Pin	2	
5	630107	Bracket	2	
6	630108	Drive-thru Ramp	2	
7	630109	Connecting pin for cylinder	2	
8	630006	Cylinder	2	
9	630007	Cylinder base connecting pin	2	
10	206032	Snap ring	10	
11	630008	Frame support connecting pin (Upper)	4	
12	630009	Frame support (Front)	2	
13	630010	Frame support connecting pin (Lower)	4	
14	630011	Frame support (Rear)	2	
15	630100	Socket Bolt	1	
16	630013	Safety block	1	
17	630014	Safety bar set	1	
18	630105	Pin for safety support	1	
19	630111	Base frame	1	
20	640024	Roller assy.	2	
21	630102	Rubber block	2	
22	620034	Rubber Pad	4	
23	610070	Rubber Pad	4	
24	420020B	Hex Bolt	2	
25	630015	Spring	2	
26	209022	Washer	2	
27	209056	Nylok Nut	3	
28	209002	Manual power unit	1	
29	209003	Hex Bolt	4	
30	209005	Nylok Nut	4	
31	640021	Power unit stand	1	
32	206006	Washer	2	
33	420046	Split pin	2	
34	630101	Oil hose	1	
35	630103	Straight Fitting	1	
36	209062	T-fitting	1	
37	630104	Oil hose	1	
38	209064	Straight fitting for cylinder	1	
39	209060	90° Fitting	1	

Item	Part#	Description	QTY.	Note
40	630501A	Parts Box	1	
PARTS FOR CYLINDER (See Fig. 13)				
8-1	630029	Bore weldment	2	
8-2	630026	Piston Rod	2	
8-3	201034	Bleeding plug	2	
8-4	630030	Head cap	2	
8-5	209078	Dust ring	2	
8-6	201035	O - Ring	2	
8-7	620049	O - Ring	2	
8-8	630028	Piston	2	
8-9	620050	O-Ring	2	
8-10	630027	O-Ring	2	
8-11	620054	Y-Ring	2	
8-12	620055	Support ring	2	
8-13	206071	Nut	2	
8-14	620064	Greasing Fitting	4	

PARTS FOR ROLLER ASSY. (See Fig. 14)

Item	Part#	Description	QTY.	Note
20-1	630031	Roller Bracket	2	
20-2	630032	Snap Ring	8	
20-3	630033	Connecting Shaft	2	
20-4	630034	Roller Shaft	2	
20-5	640023	Roller	4	

PARTS FOR SPX MANUAL POWER UNIT, 220V/60HZ/1 Phase (See Fig.15)

Item	Part#	Description	QTY.	Note
28-1	209127	Motor	1	
28-2	209109	Protective Ring	1	
28-3	209083	Motor Connecting Shaft	1	
28-4	209084	Valve Body	1	
28-5	209085	Relief Valve	1	
28-6	209086	Lock Washer	4	
28-7	209087	Socket Bolt	4	
28-8	209088	Inlet Pipe	1	
28-9	209089	O-ring	1	
28-10	209090	Filter	1	
28-11	209091	Hex Bolt	4	
28-12	209092	Reservoir	1	
28-13	209093	Screw	2	
28-14	209094	Cover of Capacitor	1	
28-15	209095	Capacitor	1	
28-16	209096	Rubber Gasket	1	
28-17	209097	Hex Bolt	1	
28-18	209098	Cover of Motor Terminal Box	1	
28-19	209099	Control Button	1	
28-20	209110	Oil Return port	1	
28-21	209100	Oil Outlet	1	
28-22	209101	Release Valve	1	
28-23	209102	Release Valve Handle	1	
28-24	209103	Washer	1	
28-25	209104	Hex Nut	1	
28-26	209105	Check Valve	1	
28-27	209128	Gear Pump	1	
28-28	209107	Oil Return Pipe	1	
28-29	209108	Filler Cap	1	

PARTS FOR INDYPRO MANUAL POWER UNIT, 220V/60HZ/1 Phase (See Fig. 15)

Item	Part#	Description	QTY.	Note
28A-1	209127A	Motor	1	
28A-2	209109	Protective Ring	1	
28A-3	209112	A.C. Contactor	1	
28A-4	209083A	Motor Connecting Shaft	1	
28A-5	209084A	Valve Body	1	
28A-6	209085A	Relief Valve	1	
28A-7	209113	Throttle Valve	1	
28A-8	209086A	Lock Washer	4	
28A-9	209087A	Socket Bolt	4	
28A-10	209088A	Inlet Pipe	1	
28A-11	209089A	O-ring	1	
28A-12	209090A	Filter	1	
28A-13	209091A	Socket Bolt	4	
28A-14	209092A	Reservoir	1	
28A-15	209093A	Cup Head Bolt with washer	4	
28A-16	209094A	Cover of Capacitor	2	
28A-17	209095A	Start Capacitor	1	
28A-17A	209095B	Run Capacitor	1	
28A-18	209096A	Rubber Gasket	2	
28A-19	209097A	Cup Head Bolt with washer	2	
28A-20	209098A	Cover of Motor Terminal Box	1	
28A-21	209099A	Button Switch	1	
28A-22	209110A	Oil Return Port	1	
28A-23	209100A	Oil Outlet	1	
28A-24	209105A	Check Valve	1	
28A-25	209101A	Release Valve	1	
28A-26	209102A	Release Valve Handle	1	
28A-27	209103A	Washer	1	
28A-28	209104A	Hex Nut	1	
28A-29	209128A	Gear Pump	1	
28A-30	209107A	Oil Return Pipe	1	
28A-31	209108A	Filler Cap	1	



Exclusively for: TOMAD International, Inc. 8847 Commerce Park Place Suite A,
Indianapolis 46268 - USA Tel: (317) 8 7 0-1199 Fax: (317) 8 7 6 -7344
www.indypro.us